

Air-driven hydraulic pump type LP

Air-driven hydraulic pumps are pneumatically driven, reciprocally acting plunger pumps. They operate as pneumatic pressure boosters with oscillating movement and automatic stroke reversal control.

The air-driven hydraulic pump type LP can generate up to 1500 bar. It is available as an single pump or as a hydraulic power pack with different tank sizes and valve banks. The delivery flow is dependent on the air pressure set and the flow resistance currently present. It can decay to standstill.

Applications are in laboratory presses, in fixture construction, in lubrication systems or in potentially explosive atmospheres.

- Features and benefits:**
- High operating pressures
 - Suitable for explosion-proof systems and equipment
No electrical energy
 - Hydraulic power packs with direct valve mounting

- Intended applications:**
- Construction and construction materials machinery
 - Fixture construction
 - Testing and laboratory equipment



Nomenclature:	Air driven hydraulic pumps
Design:	Single pump
$p_{hydraulicmax}$:	160...1500 bar
p_{airmax} :	10 bar
Q_{max} :	0.9...12 lpm

Design and order coding example

LP 125 - 16

E

/S 81

Additional elements

- Suction parts for hydraulic pumps

Design

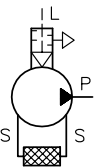
Hydraulic pump

- Ready-to-connect version
- Individual version for self-installation

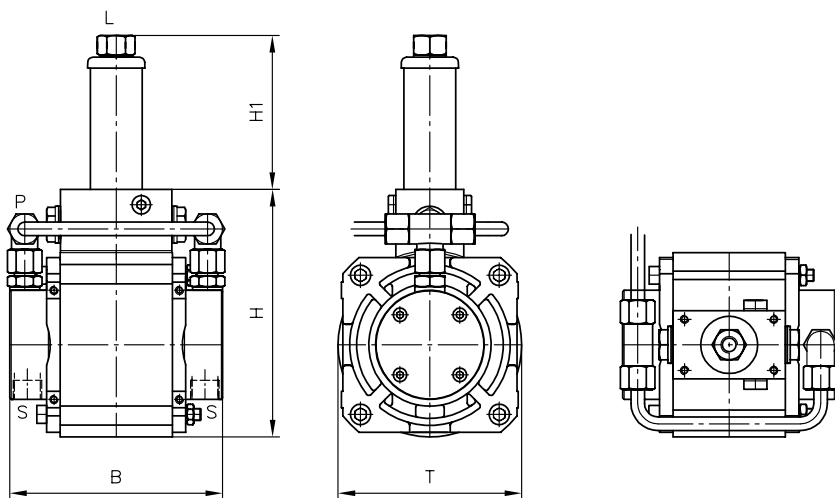
Basic type, size

Type LP, size 80, 125, 160

Function



General parameters and dimensions



Basic type and size		p_{\max} [bar]	Pressure ratio	Geom. volume per double stroke V_{hydr} [cm ³]	Tapped port (air) Pipe diameter for pressure connection (hydr)	Dimensions [mm]				m [kg]
						H	H1	B	T	
LP80-	8	700	1 : 200	1.5	G 1/4 Æ6 mm	119	94	121	85	5
	...									
	16	240	1 : 24	6						
LP125-	8	1500	1 : 243	2	G 3/8 Æ8 mm, Æ10 mm	159	114	156	135	8.5
	...									
	30	160	1 : 16	28.3						
LP160-	8	1500	1 : 400	2	G 1/2 Æ8 mm, Æ10 mm	228	136	156	175	11.5
	...									
	30	265	1 : 24	28.3						

Associated technical data sheets:

- [Air-driven hydraulic pump type LP: D 7280](#)
- [Hydraulic power pack type LP: D 7280 H](#)

Valve banks :

- [Valve bank \(directional seated valve\) type VB: D 7302](#)
- [Valve bank \(directional seated valve\) type BWN and BWH: D 7470 B/1](#)