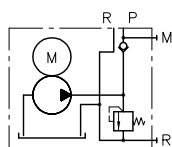


Function

Symbol:



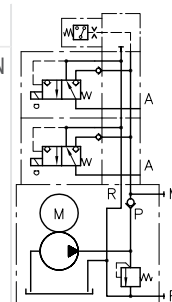
Example circuitry:

NPC 11 / 0,87 - 1/170 - R - G 12

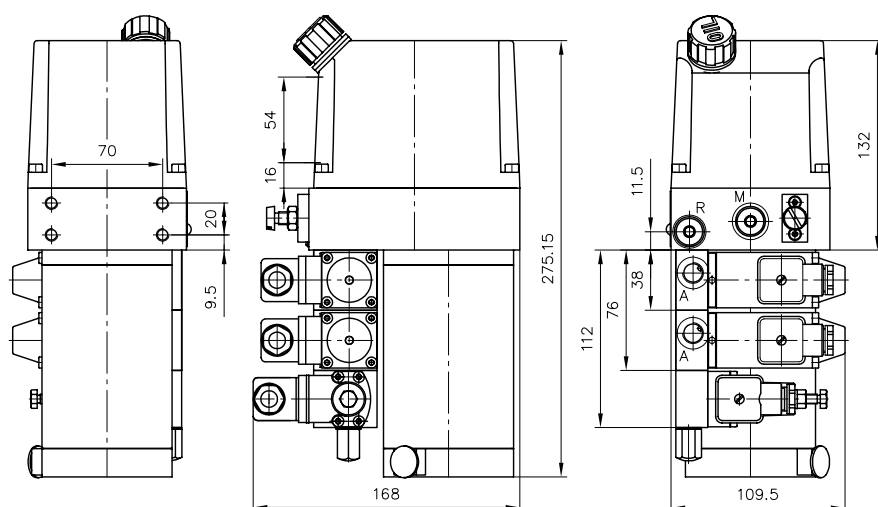
Compact hydraulic power pack type NPC, pump delivery flow approx. 0.87 lpm

BWN 1 - NN - 35 - 1 - G 12

Directly mounted valve bank type BWN with two valve sections and pressure switch for gallery P, solenoid voltage 12V DC



General parameters and dimensions



	Delivery flow						Max. pressure		
	Q _{pu} [lpm]						p _{max} [bar]	P _N [kW]	
NPC 11 (24 V)	0.2	0.31	0.44	0.61	0.87	1.05	750	0.1/0.3	6
NPC 11 (12 V)								0.1/0.25	6
NPC 12 (24 V)	0.4	0.65	0.94	1.28	1.71	2.14	750	0.6	8
NPC 12 (12 V)								0.6	8

Associated technical data sheets:

- Compact hydraulic power pack type NPC: [D 7940](#)

Directly mountable valve banks:

- Lifting/lowering valve type HSV: [D 7032](#)
- Valve bank (directional seated valve) type BWN and BWH: [D 7470 B/1](#)Valve bank (directional seated valve) type BWN and BWH: [D 7470 B/1](#)
- Pressure switches type DG: [D 5440](#), [D 5440 E/1](#), [D 5440 F](#)
- Electronic pressure transducer type DT: [D 5440 T/1](#), [D 5440 T/2](#)